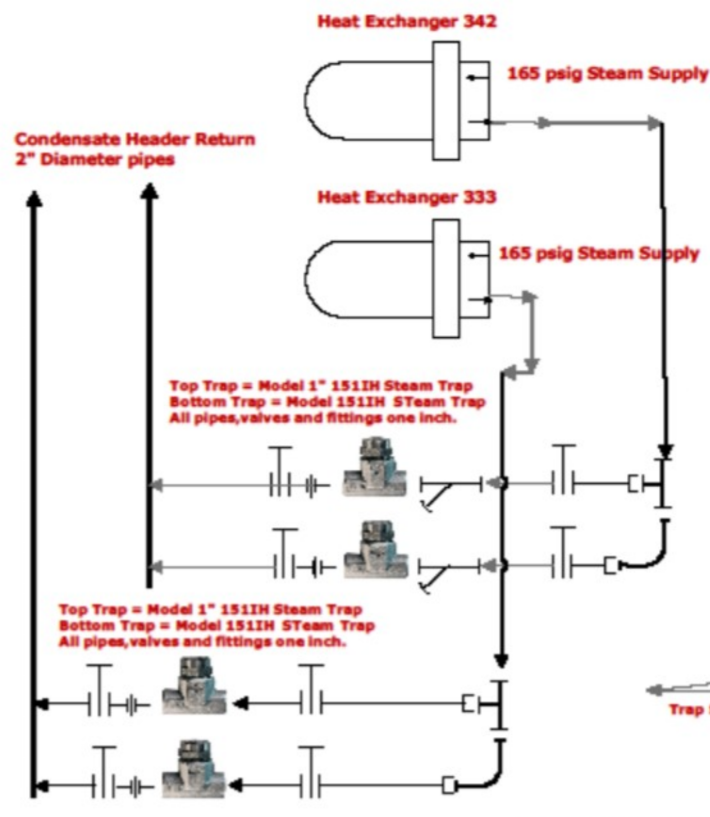
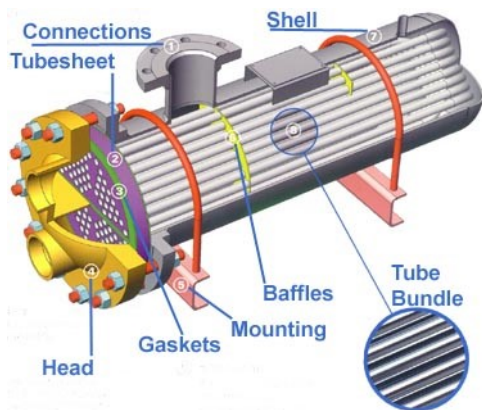


# HEAT EXCHANGERS



## IDEALLY SUITED FOR THESE PROCESS APPLICATIONS

- \*Small Compact Inline Design
  - \*Inline Line Repairable
  - \*Pilot Operated Main Valve for wide range of condensate loads.
  - \*Pilot condensate load up to 600 lbs/hr
  - \*Main Valve Load up to 4800 lbs/hr, 151I Model
  - \*Main Valve Load up to 8000 lbs/hr. 151IH Model
- Based on 100 psig inlet Pressure

CONTACT: MENTEC CUSTOMER SERVICE FOR ASSISTANCE

This Steam Trap Layout is called Tandem Trapping.

Find out how it can improve process efficiency and reduce downtime.

PLEASE CONTACT [SALES@MENTEC.ON.CA](mailto:SALES@MENTEC.ON.CA)  
TO CONFIRM THE BEST SELECTION ON THESE APPLICATIONS.